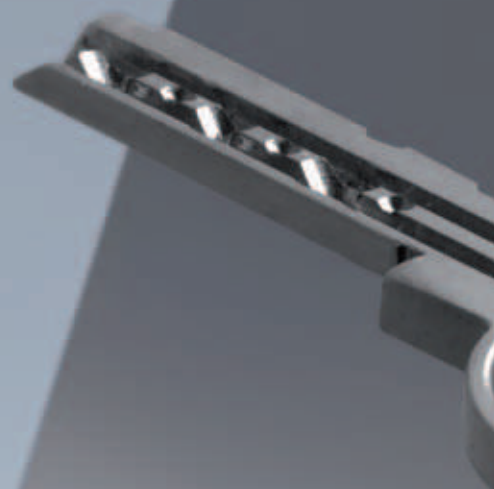


LOCKR



ENG

ojmar



LOCKR LOCKING SOLUTIONS FOR LOCKERS

Each site has particular requirements. Our range of cam locks is intended for facilities where lockers are dedicated to one specific user.

They are manufactured from materials of proven durability, providing a simple but solid and reliable solution for both wet and dry areas.



LOCKR 357 & 377



LOCKR 557 & 577




LOCKR 603 & 617




LOCKR LATCH

SOLID BRASS CAM LOCKS
WITH 6 STAINLESS STEEL PINS
FOR WET AREAS

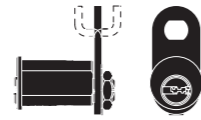
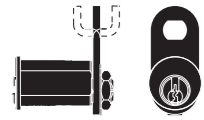
REF. 557 & 577 





A range of locks particularly suited to wet areas. The stainless steel pins, a unique solution in the industry, make the locks highly resistant to corrosion and constant use.

SOLID BRASS CAM LOCKS
WITH 6 STAINLESS STEEL PINS
FOR WET AREAS

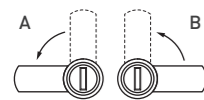
REF. 357 & 377 

A range of locks particularly suited to wet areas. The stainless steel pins, a unique solution in the industry, make the locks highly resistant to corrosion and constant use.



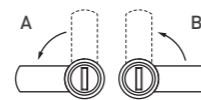
| MODEL | Ref. 557 & 577  | MODEL | Ref. 357 & 377  |
|--------------------------------|--|--------------------------------|--|
| MAIN FEATURES | | MAIN FEATURES | |
| FIXING HOLES | Nut | FIXING HOLES | Nut |
| ROTATION | 90° | ROTATION | 90° |
| KEY | Standard | KEY | Security key |
| PINS | 6-pinned stainless steel | PINS | 6-pinned stainless steel |
| DIFFERS | Up to 1600 | DIFFERS | Up to 1600 |
| MASTER KEYS | Yes | MASTER KEYS | Yes |
| FINISH |  Chrome | FINISH |  Chrome |
| MATERIALS | | MATERIALS | |
| CASING AND CYLINDER | Chrome plated brass | CASING AND CYLINDER | Chrome plated brass |
| KEY | Nickel plated brass | KEY | Argentan alloy (Nickel plated) |
| PINS | Stainless steel | PINS | Stainless steel |
| DIMENSIONS | | DIMENSIONS | |
| Ø HEAD | Ø 22 mm | Ø HEAD | Ø 22 mm |
| HEAD THICKNESS | 2 mm | HEAD THICKNESS | 2 mm |
| LENGTH 557 (L) | 23,5 mm | LENGTH 357 (L) | 23,5 mm |
| LENGTH 577 (L) | 30 mm | LENGTH 377 (L) | 30 mm |
| MAXIMUM DOOR THICKNESS 557 | 18,5 mm | MAXIMUM DOOR THICKNESS 357 | 18,5 mm |
| MAXIMUM DOOR THICKNESS 577 | 25 mm | MAXIMUM DOOR THICKNESS 377 | 25 mm |
| CAM DIMENSIONS | 20 x 3 x R mm | CAM DIMENSIONS | 20 x 3 x R mm |
| DIMENSION OF FIXING HOLE | 16,2 x 19,2 mm | DIMENSION OF FIXING HOLE | 16,2 x 19,2 mm |
| MECHANICAL REQUIREMENTS | | MECHANICAL REQUIREMENTS | |
| N° OF CYCLES | 60,000 machine cycles according to LGA | N° OF CYCLES | 60,000 machine cycles according to LGA |

POSITION



Key can only be removed in closed position.

POSITION

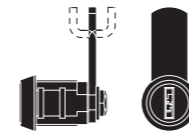



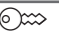


Key can only be removed in closed position.

10-WAFER CYLINDER CAM LOCKS
FOR DRY AREAS

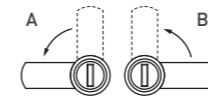
REF. 603 

A range of cam locks for dry-area facilities: gyms, shopping centres, schools, etc. Designed specifically for thin (e.g. metal) locker doors.



| MODEL | Ref. 603  | MODEL | Ref. 617  |
|--------------------------------|--|--------------------------------|--|
| MAIN FEATURES | | MAIN FEATURES | |
| FIXING HOLES | Clip or nut | FIXING HOLES | Nut |
| ROTATION | 90° | ROTATION | 90° |
| CYLINDER | 10 wafers | CYLINDER | 10 wafers |
| KEY | Reversible with round head | KEY | Reversible with round head |
| DIFFERS | Up to 4000 | DIFFERS | Up to 4000 |
| MASTER KEYS | Yes | MASTER KEYS | Yes |
| FINISH |  Chrome | FINISH |  Chrome |
| MATERIALS | | MATERIALS | |
| INTERNAL PARTS | Die cast | INTERNAL PARTS | Die cast |
| CYLINDER | Die cast | CYLINDER | Die cast |
| KEY | Nickel plated brass | KEY | Nickel plated brass |
| SPRINGS | Stainless steel | SPRINGS | Stainless steel |
| DIMENSIONS | | DIMENSIONS | |
| Ø HEAD | Ø 23 mm | Ø HEAD | Ø 24,3 mm |
| HEAD THICKNESS | 6,5 mm | HEAD THICKNESS | 4,5 mm |
| LENGTH (L) | 22 mm | LENGTH (L) | 30 mm |
| CAM DIMENSIONS | 15x3xR mm | CAM DIMENSIONS | 15x3xR mm |
| MINIMUM DOOR THICKNESS | 1 mm | MINIMUM DOOR THICKNESS | 1 mm |
| MAXIMUM DOOR THICKNESS | 13 mm | MAXIMUM DOOR THICKNESS | 23,5 mm |
| DIMENSION OF FIXING HOLE | 16,2x19,2 mm | DIMENSION OF FIXING HOLE | 16,2x20,2 mm |
| MECHANICAL REQUIREMENTS | | MECHANICAL REQUIREMENTS | |
| N° OF CYCLES | 60,000 machine cycles according to LGA | N° OF CYCLES | 60,000 machine cycles according to LGA |

POSITION

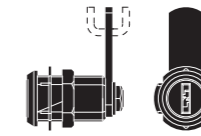


Key can only be removed in closed position.

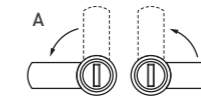
10-WAFER CYLINDER CAM LOCKS
FOR DRY AREAS

REF. 617 

A range of locks designed for lockers with thicknesses of up to 23,5 mm.



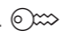
POSITION



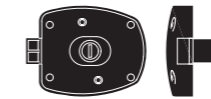
Key can only be removed in closed position.




LATCH-BOLT LOCKS FOR DRY AREAS

REF. 34 

Latch bolt Lock with a 10-wafer interchangeable cylinder specifically designed for lockers in dry areas.



| MODEL | Ref. 34  |
|------------------------|---|
| MAIN FEATURES | |
| CYLINDER | 10-wafer, Die cast Interchangeable Cylinder |
| KEY | Standard round head and reversible |
| DIFFERS | Up to 4000 |
| MATERIALS | |
| LOCK BODY | Polyamide + fibreglass |
| CASING AND CYLINDER | Die cast |
| PINS | - |
| KEY | Nickel plated brass |
| DIMENSIONS | |
| LOCK BODY LENGTH | 100 mm |
| LOCK BODY HEIGHT | 85 mm |
| LOCK BODY THICKNESS | 25 mm |
| LATCH DIMENSIONS | 24 x 11,5 mm |
| MINIMUM DOOR THICKNESS | 1 mm |
| MAXIMUM DOOR THICKNESS | 23 mm |
| LATCH STROKE | 12 mm |
| FIXING HOLES | 75,5 x 49 mm |
| SCREW FIXING HOLE | M5 COUNTERSUNK SCREW |

PRODUCT REFERENCES

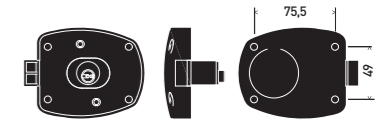
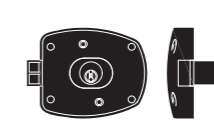
RIGHT **34.D**
LEFT **34.I**



LATCH-BOLT LOCKS FOR WET AREAS

REF. 35 & 36  

The interchangeable core with 6 stainless steel pins makes these models highly resistant to corrosion.

Model 36 is supplied with a security key, which has an exclusive and registered profile. The key is flat and reversible and thus pleasant and easy to use.



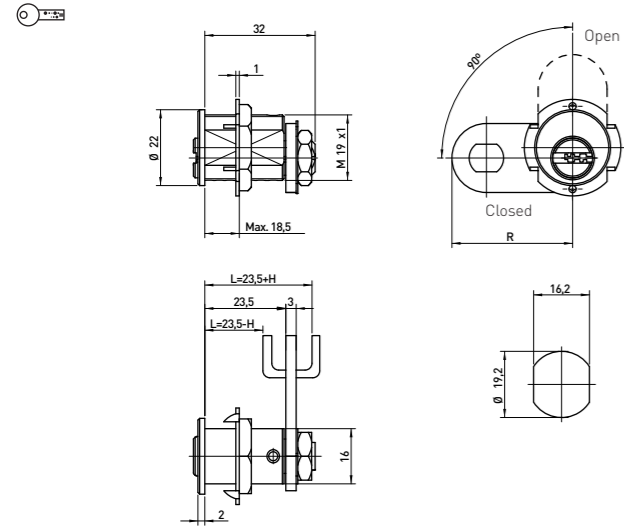
| MODEL | Ref. 35  | Ref. 36  |
|------------------------|---|---|
| MAIN FEATURES | | |
| CYLINDER | Interchangeable solid brass core with 6 stainless steel pins | Interchangeable solid brass core with 6 stainless steel pins |
| KEY | Standard | Security key |
| DIFFERS | Up to 1600 | Up to 1600 |
| MATERIALS | | |
| LOCK BODY | Polyamide + fibreglass | Polyamide + fibreglass |
| CASING AND CYLINDER | Chrome plated brass | Chrome plated brass |
| PINS | Stainless steel | Stainless steel |
| KEY | Nickel plated brass | Argentan alloy (Nickel plated) |
| DIMENSIONS | | |
| LOCK BODY LENGTH | 100 mm | 100 mm |
| LOCK BODY HEIGHT | 85 mm | 85 mm |
| LOCK BODY THICKNESS | 25 mm | 25 mm |
| LATCH DIMENSIONS | 24 x 11,5 mm | 24 x 11,5 mm |
| MINIMUM DOOR THICKNESS | 1 mm | 1 mm |
| MAXIMUM DOOR THICKNESS | 23 mm | 23 mm |
| LATCH STROKE | 12 mm | 12 mm |
| FIXING HOLES | 75,5 x 49 mm | 75,5 x 49 mm |
| SCREW FIXING HOLE | M5 COUNTERSUNK SCREW | M5 COUNTERSUNK SCREW |

PRODUCT REFERENCES

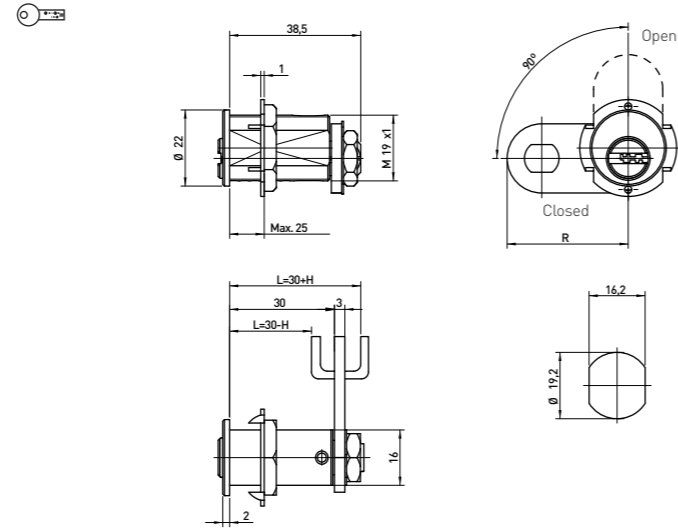
RIGHT **35.D** RIGHT **36.D**
LEFT **35.I** LEFT **36.I**

CAM
LOCKS

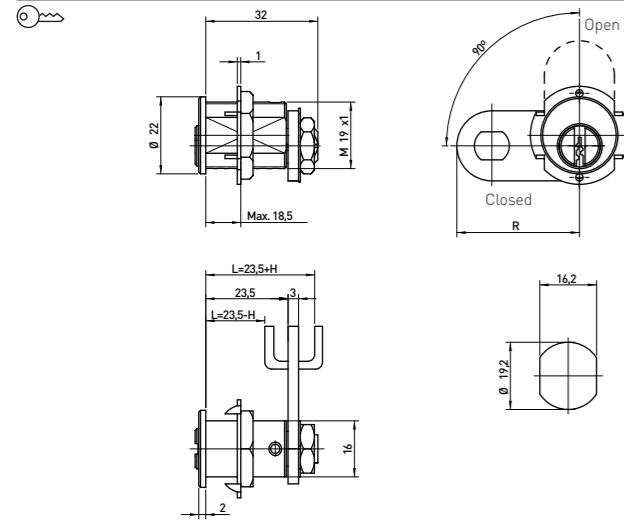
REF. 357



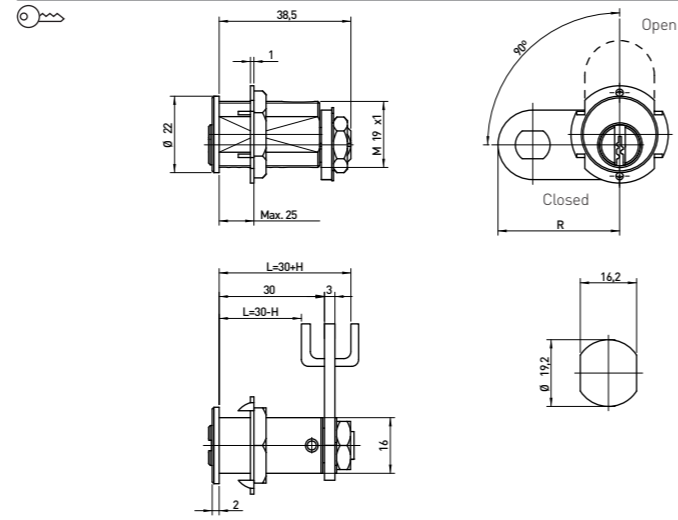
REF. 377



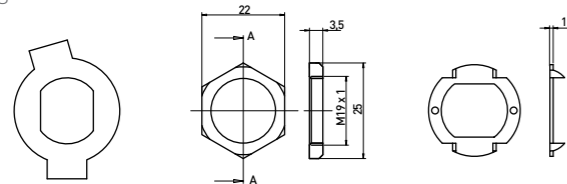
REF. 557



REF. 577

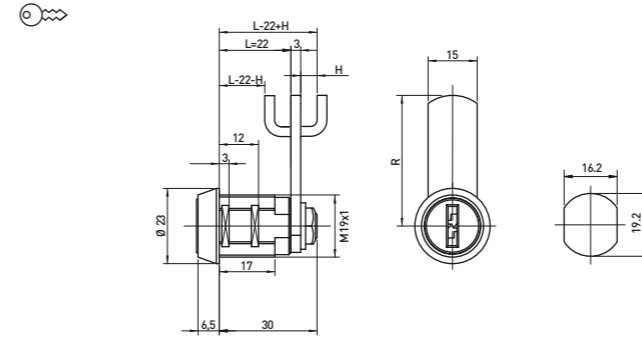


ACCESSORIES

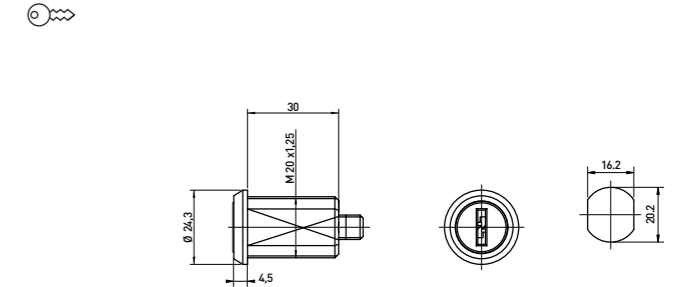


CAM
LOCKS

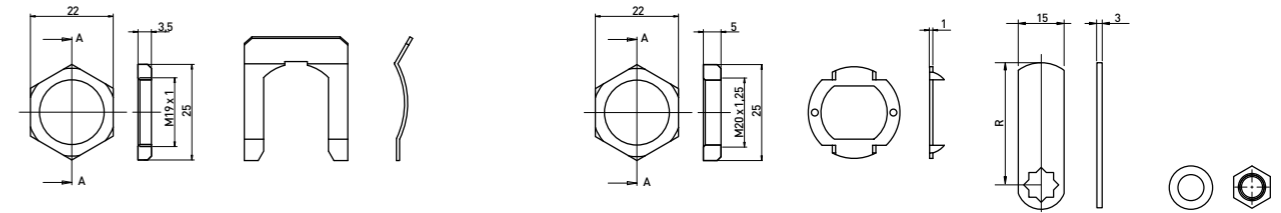
REF. 603



REF. 617

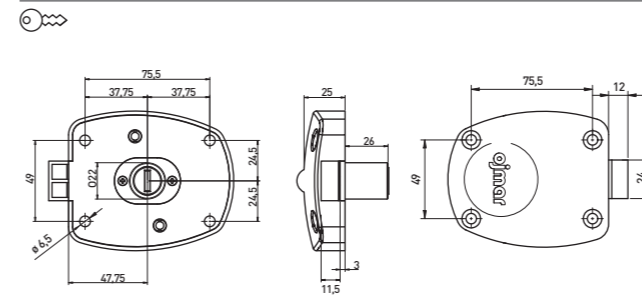


ACCESSORIES

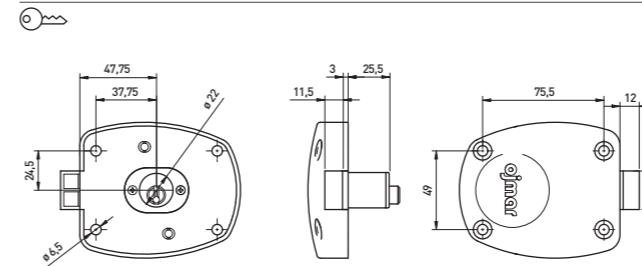


LATCH-BOLT
LOCKS

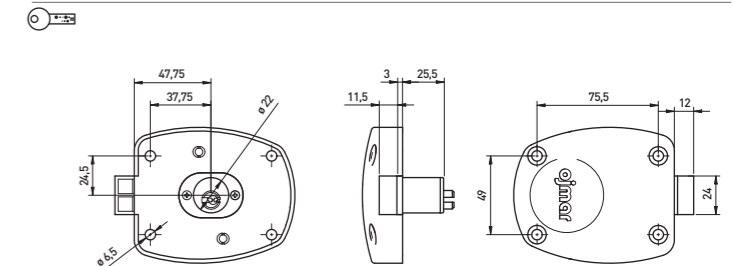
REF. 34

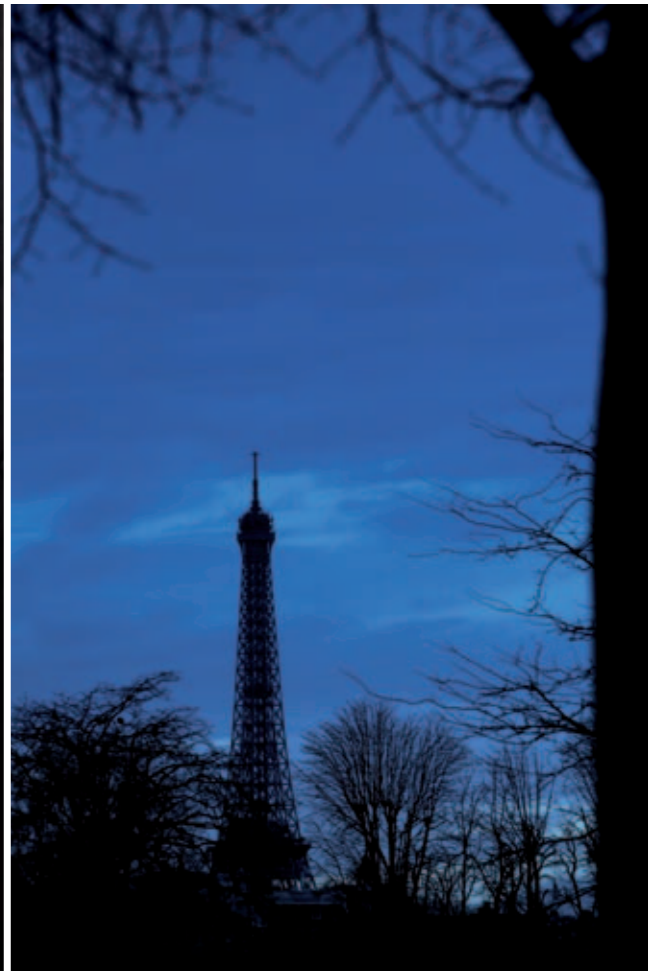
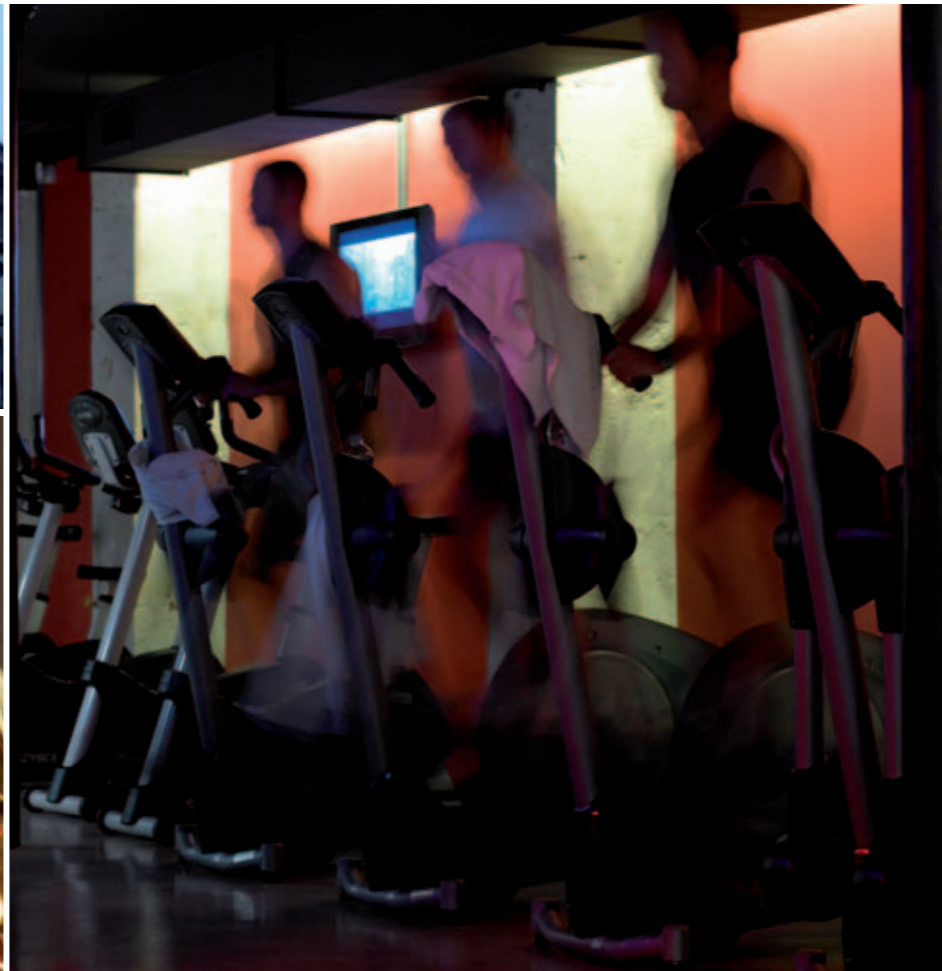


REF. 35



REF. 36







OJMAR, S.A.
Polígono Industrial de Lerun, s/n
20870 Elgoibar
Gipuzkoa
SPAIN
T. +34 943 748484
F. +34 943 748490
www.ojmar.com

